

3rd EMMA Workshop on Wireless Systems Research

London, UK, 17th of February 2009

The third and final EMMA Workshop will take place in London, United Kingdom, 17th of February 2009. This will be the opportunity for all interested in embedded systems to learn about the results of this project, running from May 2006. Joint effort of several partners from Europe and a partner from Korea resulted in creating an interesting novel solution in the field of embedded middleware for mobility applications – the EM2P platform for cooperative sensing objects in the transport domain. Live demonstrations of results are foreseen.

The Workshop will be the forum for discussion on new developments in the area of wireless systems – research led in this area in the frame of other similar projects will be presented. The event will gather those interested in the Automotive, Transport, Embedded Systems, Telecommunications domains (industry, R&D centres and others).

Agenda

09:30 – 10:00	Coffee and Arrival
10:00 – 10:10	Welcome and Introduction to the objective of the Workshop (Antonio Marqués, ETRA Research and Development, S. A. - ETRA I+D, Spain)
10:10 – 10:40	The EMMA Project: Wireless Embedded Middleware in Mobility Applications (Manuel Serrano, ETRA I+D, Spain)
10:40 – 11:00	Coffee break
11:00 – 11:30	Hierarchical Wireless Systems approach for Intelligent Transport System applications (Kirusnapillai Selvarajah, Newcastle University, United Kingdom)
11:30 – 12:00	The IPAC project (Damien Pigué, CSEM - Centre Suisse d'Electronique et de Microtechnique in Neuchatel, Switzerland)
12:00 – 13:30	Lunch

After lunch all delegates are invited to the Live Demo of the EMMA results

13:30 – 14:00	Using Wireless Sensors for Pervasive Environmental Monitoring, The MESSAGE Project (Phil Blythe and Jeff Neesham, Newcastle University, United Kingdom)
14:00 – 14:30	U-cities (Electronics & Telecommunications Research Institute – ETRI, Republic of Korea)
14:30 – 15:00	Conet (Pedro Marrón, University of Bonn, Germany)
15:00 - 15:30	Coffee break
15:30 – 16:00	The PECES project (Antonio Marqués, ETRA I+D)
16:00 – 16:30	Round table: Opportunities for Further Research in Wireless Systems (Antonio Marqués, ETRA I+D).
16:30	End of the meeting

How to register?

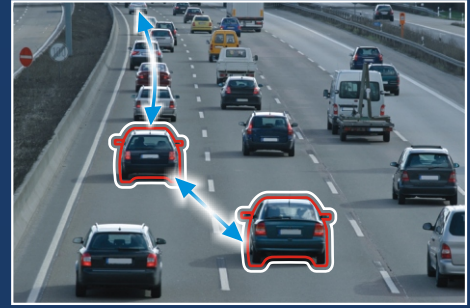
To register to the 3rd EMMA Workshop please go to:
www.emmaproject.eu, "Events" section.

Logistics and accomodation

Venue of the Workshop:

The Rubens at the Palace Hotel
39 Buckingham Palace Road
London SW1W 0PS
The Van Dyke Suite
London, UK

The location map of the venue and the list of hotels are accessible from: www.emmaproject.eu, "Events" section.



Information on the projects presented at the Workshop:

IPAC (Integrated platform for autonomic computing)

7. Framework Program

Budget: 1.65 MEuro

Duration: from May 2008 – 30 months

<http://ipac.di.uoa.gr/>

Conet (Cooperating Objects Network of Excellence)

7. Framework Program

Budget: 4 MEuro

Duration: from June 2008 – 48 months

<http://www.cooperating-objects.eu/>

Peces (PErvasive Computing in Embedded Systems)

7. Framework Program

Budget: 1.75 MEuro

Duration: from October 2008 – 39 months

<http://www.ict-peces.eu/>

About u-Cities:

A u-City is an envisioned futuristic city integrating advanced IT-based infrastructures and ubiquitous information services into the urban space aiming at providing a high quality of life for residents in terms of security, welfare, and convenience and being achieved by various advanced information technologies such as RFID/USN, SoC, Embedded SW, Security, etc.

Example: project in the city of Pusan, duration: 2005-2012

What is EMMA?

- EMMA stands for „Embedded Middleware in Mobility Applications“
- EMMA is a Specific Targeted Research Project (STREP) funded under the 6th Framework Programme (IST Priority)
- EMMA started in May 2006 and will have a duration of 30 months (till October 2008)
- EMMA consortium consists of 8 partners representing automotive manufacturers, automotive component suppliers, transportation service providers and universities
- EMMA budget is €5M

EMMA will deliver:

- A middleware platform and a development environment
- Prototypes of wireless cooperating sensors incorporating EMMA embedded software
- Validation pilots
- The business model making possible the deployment of results

You will find up-to-date information on the EMMA project at the following address: www.emmaproject.eu



More information

For further information on the event please contact:

Patrycja Młynarek

ITTI Ltd. (Poznan, Poland)

Tel. +48 61 6226941 (direct)

Tel. +48 61 6226985 (secretary)

Mail: patrycja.mlynarek@itti.com.pl

Dr Kirusnapillai (Selva) Selvarajah

Newcastle University (United Kingdom)

Tel: +44 191 222 8546

Tel. +48 61 622 6941 (direct)

Mail: K.Selvarajah@ncl.ac.uk